

TYPE > multi-gym

MODEL > HF-FMXMG2

HOTEL FITNESS®

The World's Leader In Hotel & Resort Fitness®

FEATURES & BENEFITS

- Modular Designer Gym
- Easy-To-Use Instructional Placard
- Enclosed Steel Weight Stacks
- Multi-Functional Trainer
- Industrial Construction
- Manufactured in the U.S.A.



Shoulder Press



Incline Press



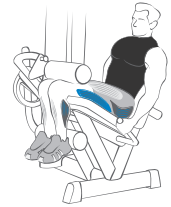
Chest Press



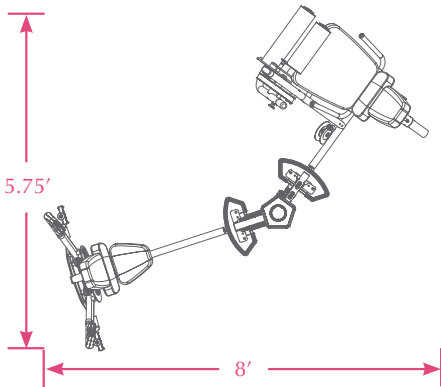
Bicep/Tricep



Leg Extension



Leg Curl



SPECS > HF-FMXMG2

Dimensions 8' x 5.75' x 6.8'

Frame Color Charcoal

Upholstery Color Charcoal